



36

YEARS
OF LEADERSHIP
IN TECHNOLOGY

PROUDLY
MADE
IN
INDIA



36+ | YEARS OF TRUST
COUNTRY PRESENCE
GLOBAL OEM BRANDS MANUFACTURER

EMPOWERING A GREENER TOMORROW

THE COMPANY WITH OVER FOUR DECADES
OF MANUFACTURING EXPERTISE AND INNOVATION

ABOUT US

Protonix FORTUNER India Pvt. Ltd. is a professionally managed OEM/ODM, ISO 9001:2015 certified organization engaged in the designing, developing, and manufacturing of power electronics. With more than four decades of manufacturing expertise and innovation in the realm of Solar Renewables, Power backup, LED lighting, display devices, entertainment electronics, and power electronics industries in India, we have earned an undisputable position and reputation among the Pioneers and Leaders of Renewable Power Sector.

Our core offering includes Power Backup Solutions, Energy Efficient Lighting, Renewable Energy Consultancy, Product Development, and Manufacturing. Several leading Solar and LED Lighting Indian and International brands, get their products developed and manufactured at our world-class plant equipped with Latest Design Lab, Modern Machineries, and Cutting-edge Inspection Setup. Our every product undergoes the strict supervision of our supervisors and Inspectors before being dispatched out of the plant.

Today, the industry recognizes us as an ace quality manufacturer and exporter, known for Zero Defect Manufacturing, Timely Deliveries, Customer-oriented approach, and Prompt after-sales support. We are a preferred source for Contract manufacturing, New Product development, and Upgrading products for many Indian and International leading brands engaged in power electronics and lighting who seek Well-equipped, World-class manufacturing setups with matching expertise and Engineering skills. We offer Innovative products to let our clients compete with the global market and surpass international compliances and standards.

We are a strong team of 200+ well-versed employees, including an experienced and talented R&D team of selected industry tycoons, a skilled Production team of technicians, supervisors, engineers, and shop-floor administrators. Our qualified and professionally trained team for Inspection, Quality, and Reliability has made us the craved choice of many MNCs.

We have a dedicated and caring team for pre-sales and after-sales services with a customer-oriented approach and caring attitude, which takes care of our prospects and clients for their complete requirements, from answering queries to clarifying doubts to submitting timely quotations to helping clients in decision-making and selecting the right product in line with their requirements and budget.

People often talk to our team to learn about the latest technologies, cutting-edge innovations, feature-packed products, and emerging trends to stay ahead of the pack in today's highly competitive world.

We manufacture 25,000 inverters to 2 Lakhs of LED Lighting per month. We are highly flexible and adaptable to client needs and can deliver export-quality customized products in bulk quantity at short notice.

PROTONIX FORTUNER INDIA PVT. LTD.



JOURNEY OF GREENER TOMORROW

Started with the Manufacturing of Colour TV Mother Board with one of the few manufacturers present in India in 1984

Developed Pure Sine Wave PCB board & started supplying to many established brands

Started doing OEM for many Well Known Brands

Launched LED Lighting Products

Groove in Global Presence in 20+ Countries

Design and development of IGBT Based Static Stabilizers

Launched Smart Hybrid Inverter

Started a joint venture in Battery Production



Started Supplying Color TV Mother board for all major brands

Started Manufacturing of Sine Wave Inverters

Entered in the International Market

With the Green Revolution going commenced the production of Solar Inverters

Launched MPPT Range of Solar Inverters & Controllers

Introduced Hybrid Inverters & Online UPS

Introduced ESS (Energy Storage Systems) & Inverter with inbuilt Lithium Batteries

VISION, MISSION & VALUES



VISION

We have to stay as a hard-core professional in all our endeavors:

- By building a truly World-class company with sustainability at its core.
- By doing continuous technology upgradation, regular and timely training of employees, manufacturing efficiently, keeping price under check, and providing emphatic after-sales service and support.

MISSION

To have an unwavering and unflinching focus on:

- Continuous innovation, product improvement, technology enhancement, and unflinching focus on customer satisfaction.
- Zero manufacturing defects and offering truly world-class products by adopting the latest manufacturing techniques.



VALUES

To abide by World-class Ethics and Moral Values.

- To provide the best-in-the-class pre-sales and after-sales service.
- To Go Green, Save Earth and Support Planet Sustaining Practices.



MANUFACTURING CAPABILITIES

Our automated modern manufacturing state-of-the-art facility, is strategically located in the manufacturing hub of Delhi NCR, Noida, Uttar Pradesh, in a spread of over 25 thousand Sq.ft. Our strong leadership, well-informed commercial team, advanced feature-packed latest machinery, and business network across the globe are adept at providing best-in-class Power Backup Solutions for all needs across the world, no matter where our products are required.



MI (PCB ASSEMBLY LINE)



(INVERTER ASSEMBLY LINE)

We are well-equipped with advanced infrastructure and have high-end professional capabilities for manufacturing next-generation world-class quality products and developing innovative inverters and solar charge controllers as per the latest technologies and emerging needs of the industries and the clients. We have upgraded scores of products for our several national and international brands in the realm of power backup solutions, power electronics, batteries, and LED Lighting.

Our battery assembly line is one of the most modern battery assembly lines in the world, many envies. With well-planned manufacturing facilities to manufacture large quantities in short periods, prudent and timely deliveries, complete in-house inspection, and longer shelf and service life of our products, we have become the unanimous choice of many well-known national and international business houses and leading industries.



(BATTERY ASSEMBLY LINE)

LEADERSHIP TEAM

Mr. ANIL BHUSHAN

He is a B. Tech in Electronics and Communication Engineering from Indian Institute of Science, Bangalore. He has 5 decades of experience as a techno-commercial entrepreneur, besides having hands on experience in design and development of analog and video signal processing, system integration, power electronics and switching power supplies. He is passionate about Financial, Marketing Management and Lighting Technology.



Mr. ASHISH CHOUDHARY

He is a Bachelor of Technology from MIET in Electronics and Communication Engineering with close to two decades of techno-commercial experience in International Business. He is among the recipients of Young Achievers Awards 2019 in the promotion of Green Technology. He is a dynamic name in the promotion of Make in India initiative, competing with global giants in the realm of solar power besides other sources of renewable energy and secondary storage systems for electrical power.

Mr. AMIT SAXENA

He is a graduate with Electronics and Communication Engineering from Roorkee. He has more than 25 years of experience in R&D, production planning and management, design & development, value engineering in power electronics and production validation in accordance with the metrics of national & international standards.

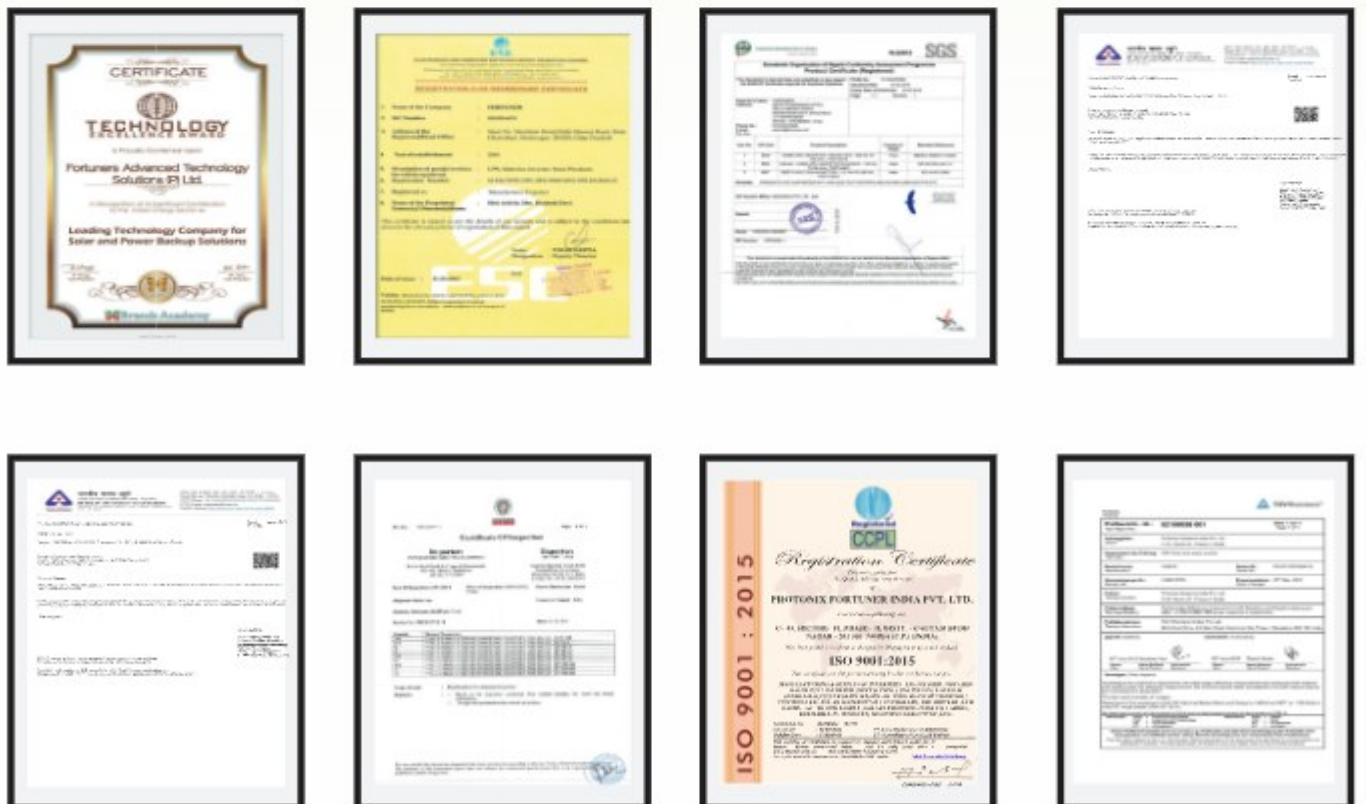


CERTIFICATIONS & AWARDS

FORTUNER product have been recognized, appreciated, and felicitated with several certifications, and awards since their inception long ago. These awards were awarded to us for our unique designs, world-class quality, customer-oriented approach, prompt after-sales service, and on-site flawless performance.

Our several certifications and awards from MNRE (Ministry of New & Renewable Energy) for our environmentally friendly products and practices are testimonials of our user-friendly operations, responsible management, Global Warming Consciousness, and unflinching support to save the planet.

We are ISO 9001:2015 certified from JAS-ANZ and are certified by NSIC, the National Small Industries Corporation under the Ministry of Micro Small and Medium Enterprises.



RESEARCH & DEVELOPMENT



Owing to the nature of our business and the demands of our clients it is imperative on our part to keep abreast of the latest changes in systems, processes and technologies to offer the best to our clients and keep competition at bay.

To be on the top of our game, we have an elaborate team of experts who engage in the latest R&D in the industry and guide the team to engage and employ the most contemporary solutions. This is with a view to produce the cutting edge and most innovative, cost-effective quality products across all verticals for optimum efficacy and return for money.



PRODUCT AUTOMATION

We are equipped with latest in-house AI, MI & SMD which help us producing flawless quality products with precise parameters at an amazing pace to deliver large volumes in a small span of time. This provides us a definite edge over the competition and stand us apart from our competitors and the rest of the world.

With our next-generation industrial automation system and products, our clients and business houses can improve their product life cycle with our integrated advanced IT applications, latest tools and technologies and efficient engineering practices, leading to advantages like High Productivity, High Flexibility, High Information Accuracy and High Safety.



AI (AUTO INSERTION CHIP MOUNTER)



VCD (Variable Central Distance)



SEQUENCER



PHOTOMETRY GLOBE



REFLOW OVEN



SMT (Surface Mount Technology) PICK & PLACE MACHINE

INTERNATIONAL TECHNICAL TRAININGS & EXHIBITIONS



POWERELEC NIGERIA-2023



REI-2022



INDEE BANGLADESH-2020



NEE UAE-2018



TECHNICAL TRAINING ZIMBABWE-2016



TECHNICAL TRAINING ZAMBIA-2015

As a part of our marketing strategy, we consider it crucial to provide technical know-how and commercial parlance to our business partners to let them engage with their customers professionally and profitably. We are of the opinion and believe that training is at the top of the priority list to enhance our business relationships with our distributors, dealers and clients to keep them informed and updated with the latest happenings in the industry.

OUR CLIENTS

We are proud to have the privilege of working alongside some of the most esteemed companies. We have a growing list of clients who rely on us for their complete electrical and power needs, and we feel honored in catering them with utmost care, ethics, and accountability.



POWER INVERTERS

HOME & INDUSTRIAL

FORTUNER Power Inverters are designed exclusively to meet varied needs for Homes, Offices, Institutions, Hospitals, Industrial applications, and many others to name all.

These power inverters are Pure Sine Wave Inverters and are designed to be used as UPS for computer applications or as normal Inverters for home appliances.

These inverters are available in single-phase and three-phase and are highly efficient even in the most critical conditions. Their selectable UPS/INV function along with Battery type selection (SMF/Tubular) feature makes them highly user-friendly and ensures maximum power utilization, battery life enhancement and long power backups.

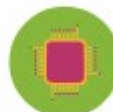


Our Salient Features

- User-Friendly - Selectable HYBRID/PCU Function.
- Highly Efficient - Saves electricity and Enhances Battery Life.
- Flexibility - Easy to switch over UPS/INVERTER mode.
- Extra Power & Longer Backup - Much better than its other counterparts
- Longer life - The Pure sine wave technology protects appliances and other sensitive electronic devices.



TUBULAR / SMF, to Enhance the battery Life & Backup



DSP based control guarantees high Reliability & Fast processing



Intelligent Power full Grid Charging for speedy Charging of Batteries.



Extra Power & longer backup from the same Battery in comparison to other low efficiency inverters.



Unique onsite parameter setting features provide the flexibility to change the UPS / INVERTER operating Parameter as per site conditions.



LCD Display displays all Inverter parameters like: Battery & Mains Input and Output, Charging Current & Load Power parameters, which makes our inverters very user friendly.



Sine wave Inverters gives the same current which you get from power grid, in comparison to square wave inverters. Pure Sine Wave protects and gives longer life to all Home appliances and sensitive Electronic devices.



Durable Design to sustain all type of Power fluctuations and fully protect the connected equipments.

TECHNICAL SPECIFICATIONS

| Model | FR100,FR400 FR500,FR700 FR900,FR1200 | FR1700 FR2200 FR2500 FR3000 | FR2500 FR3000 FR3500 FR5000 | FR5000 FR6000 FR7500 | FR10K FR12K FR15K | FR3P10K, FR3P12K FR3P15K, FR3P20K FR3P25K, FR3P30K |
|---|--|--------------------------------------|--------------------------------------|----------------------------|-------------------------|--|
| Battery Voltage | 12V | 24V | 48V | 96V | 120V, 180V, 240V | Customized* |
| Technology | DSP Based Full Bridge Topology | | | | | |
| Input/Output Phase | Single Phase | | | | Three Phase | |
| Output Voltage on Inverter Mode | 220 ± 2% | | | | 220 ± 2% Per Phase | |
| Output Frequency on Inverter Mode | 50Hz ± 0.1Hz | | | | | |
| Changeover Time UPS Mode | <10 ms | | | | NA | |
| Changeover Time INV Mode | <30 ms | | | | <40 ms | |
| Changeover Mains to UPS and UPS to Mains | Automatic | | | | | |
| Output Waveform on Backup Mode | Pure Sine Wave | | | | | |
| THD | <3% (On Resistive/Linear Load) | | | | | |
| Efficiency* | >80% | | | >85% | | |
| Charger | CCCV Charger | | | | | |
| Charging Current | Up to 15Amp* | | | Up to 20Amp* | | |
| Surge Load Capacity | 300% | | | | | |
| Input Voltage Range (UPS mode) | 170-260+/-10V | | | NA | | |
| Input Voltage Range (INV mode) | 100-290+/-10V | | | 160-260+/-10V | | |
| Output Voltage on Mains Mode | Same as Input | | | | | |
| Output Frequency on Mains Mode | Same as Input | | | | | |
| DISPLAY, PROTECTIONS AND INDICATIONS | | | | | | |
| Display | 16x2 Alpha Numeric LCD Display with LED Indications | | | | | |
| Display Parameters | Output Power (Watt), Mains AC Voltage, Output AC Voltage, Temperature (Deg. C), Battery Voltage, Charging (Amp.) | | | | | |
| Protections with Buzzer Indications | Low Battery, Overload, Short Circuit, Over Temperature | | | | | |
| Auto Reset Features | Yes | | | | | |

Applications



Telecom



UPS



Emergency
Lighting



Security



Utility



Railways



Photovoltaic



Universal

PWM SOLAR UPS/ INVERTER

FORTUNER PWM Solar UPS/Inverters are the first preference for budget-conscious people and are the popular choice for middle-class homes and small businesses where price matters owing to the budgetary constraints.

These are simple in design, easy to install, and user-friendly to work with.

These inverters are best suited for smaller solar energy systems, like for small businesses and offices with less load. These are available in single phase and three phase. They come with intelligent powerful grid charging for speedy charging of batteries.



Our Salient Features

- User-Friendly - Selectable HYBRID/PCU and TUBULAR/SMF Function.
- Highly Efficient - Saves electricity and Enhances Battery Life.
- Quick Charging - These have intelligent Power-full grid charging and speedy charging of batteries.
- Extra Power & Longer Backup - Much better than its other counterparts
- Longer life - The Pure sine wave technology protects appliances and other sensitive electronic devices.



DSP based control guarantees high Reliability & Fast processing



TUBULAR/ SMF to Enhance the battery Life & Backup



User can set Solar Power Utilization (HYBRID/ PCU mode) according to the requirement.



Intelligent Power full Grid Charging for speedy Charging of Batteries.



Extra Power & longer backup from the same Battery in comparison to other low efficiency inverters.



Unique onsite parameter setting features provide the flexibility to change the UPS / INVERTER operating Parameter as per site conditions.



LCD Display displays all Inverter parameters like: Battery & Mains Input and Output, Charging Current & Load Power parameters, which makes our inverters very user friendly.



Sine wave Inverters gives the same current which you get from power grid, in comparison to square wave inverters. Pure Sine Wave protects and gives longer life to all Home appliances and sensitive Electronic devices.



Durable Design to sustain all type of Power fluctuations and fully protect the connected equipments.



No Need to use additional UPS for Computer. User can select UPS or INVERTER mode operation as per requirement.

TECHNICAL SPECIFICATIONS

| Model | FR100S, FR400S FR500S, FR700S FR900S, FR1200S | FR1700S, FR2200S FR2500S FR3000S | FR2500S, FR3000S FR3500S FR5000S | FR5000S FR6000S FR7500S | FR10KS FR12KS FR15KS | FR3P10KS, FR3P12KS FR3P15KS, FR3P20KS FR3P25KS, FR3P30KS |
|---|--|--|--|-------------------------------|---|--|
| Battery Voltage | 12V | 24V | 48V | 96V | 120V, 180V, 240V | Customized* |
| Technology | DSP Based Full Bridge Topology | | | | | |
| Input/Output Phase | Single Phase | | | | | Three Phase |
| Output Voltage on Inverter Mode | 220 ± 2% | | | | | 220 ± 2% Per Phase |
| Output Frequency on Inverter Mode | 50Hz ± 0.1Hz | | | | | |
| Changeover Time UPS Mode | <10 ms | | | | NA | |
| Changeover Time INV Mode | <30 ms | | | | <40 ms | |
| Changeover Mains to UPS and UPS to Mains | Automatic | | | | | |
| Output Waveform on Backup Mode | Pure Sine Wave | | | | | |
| THD | <3% (On Resistive/ Linear Load) | | | | | |
| Efficiency* | >80% | | | >85% | | |
| Charger | CCCV Charger | | | | | |
| Charging Current | Up to 15Amp* | | | Up to 20Amp* | | |
| Surge Load Capacity | 300% | | | | | |
| Grid AC Input Voltage (UPS mode) | 170-260+/-10V | | | NA | | |
| Grid AC Input Voltage (INV mode) | 100-290+/-10V | | | 160-260+/-10V | | |
| Output Voltage on Mains Mode | Same as Input | | | | | |
| Output Frequency on Mains Mode | Same as Input | | | | | |
| SOLAR CHARGER* | | | | | | |
| System Battery Voltage | 12V | 24V | 48V | 96V | 180V/240V/360V | As Per System Requirement |
| Maximum Connected Panel Array VOC | 30V | 50V | 90V | 180V | 300V/ 400V | |
| Maximum Panel Current | 50Amps. | 50Amps. | 50Amps. | 50Amps. | 50Amps. | |
| Suggested Solar Panel Watt Power* | 600 | 1200 | 2400 | 4800 | As Per Battery Voltage & System Requirement | |
| DISPLAY, PROTECTIONS AND INDICATIONS | | | | | | |
| Display | 16x2 Alpha Numeric LCD Display with LED Indications | | | | | |
| Display Parameters | Output Power (Watt), Mains AC Voltage, Output AC Voltage, Temperature (Deg. C), Battery Voltage, Charging (Amp.) | | | | | |
| Protections with Buzzer Indications | Low Battery, Overload, Short Circuit, Over Temperature | | | | | |
| Auto Reset Features | Yes | | | | | |

Applications



Telecom



UPS

Emergency
Lighting

Security



Utility



Railways



Photovoltaic



Universal

MPPT SOLAR (Off Grid) UPS/INVERTER

FORTUNER Solar UPS/ INVERTER with inbuilt MPPT (Maximum Power Point Tracking) Solar charger is specially designed for maximum utilization of Solar Power. High efficiency MPPT charger design ensure 20 - 30 % more solar energy harvest by using this Inverter as compared to other topology Inverters with the same capacity of panel array. Wide Solar input voltage range makes our inverters compatible with all solar panels without limiting their Vmp.

FORTUNER MPPT inverter have dual LCD display which shows inverter and solar charger parameters separately. Real time solar parameters can be monitored in a single view. We are providing flexible parameters setting features in our Inverters. Users can set all parameters according to their requirements. All Single Phase and Three Phase Solar MPPT UPS have selectable HYBRID/ PCU function, which ensure maximum utilization of solar power according to user requirements.

Battery type selection (SMF/ TUBULAR) feature make our inverter compatible with any Battery. This function enhances the battery life and backup.



- | | | | |
|--|--|--|--|
| | Increases the output by 30% with MPPT technology | | TUBULAR / SMF, to Enhance the battery Life & Backup |
| | User can set Solar Power Utilization (HYBRID / PCU mode) according to the requirement. | | Intelligent Power full Grid Charging for speedy Charging of Batteries. |
| | Extra Power & longer backup with the same Battery as completed to other low efficiency inverter. | | Unique onsite parameter setting features provide the flexibility to change the UPS /INVERTER operating Parameters as per site conditions. |
| | LCD Display displays all Inverter parameters like: Battery & Mains Input and Output, Charging Current & Load Power parameters, which makes our inverters very user friendly. | | Sine wave Inverters gives the same current which you get from power grid, in comparison to square wave inverters. Pure Sine Wave protects and gives longer life to all Home appliances and sensitive Electronic devices. |
| | Durable Design to sustain all type of Power fluctuations and fully protect the connected equipments. | | No Need to use additional UPS for Computers. User can select UPS or INVERTER mode operation as per requirement. |

TECHNICAL SPECIFICATIONS

| Model | MPPT FR700S | MPPT FR1000S | MPPT FR1200S | MPPT FR1700S FR2200S | MPPT FR3500S FR5000S | MPPT FR5000S,FR6000S FR7500S | MPPT FR10000S |
|---|---|-----------------|-----------------|----------------------------|----------------------------|------------------------------------|------------------|
| Series | Fusion MPPT | | | Platinum MPPT | | | EF MPPT |
| Battery Voltage | 12V | | 24V | | 48V | 96V | 120V |
| Technology | DSP Based Full Bridge with MPPT Technology | | | | | | |
| Input/ Output Phase | Single Phase | | | | | | |
| Power Device | MOSFET | | | | | | IGBT |
| INVERTER/ UPS | | | | | | | |
| Output Voltage on Inverter Mode | 220 ± 5% | | | | | | |
| Output Frequency on Inverter Mode | 50Hz ± 0.5Hz | | | | | | |
| Changeover Time on Ups Mode | < 10ms | | | | | | |
| Change over Time on Normal Mode | < 30ms | | | | | | |
| Change over Mains to UPS and UPS to Mains | Automatic | | | | | | |
| Output Waveform on Backup Mode | Pure Sine Wave | | | | | | |
| THD | < 3% | | | | | | |
| Charger | Solar + Grid with Solar Priority* | | | | | | |
| Inverter Overload | > 100% | | | | | | |
| Surge Load Capacity | 300% | | | | | | |
| Input Voltage (UPS) | 180V-260V | | | | | | |
| Input Voltage (INV.) | 100V-290V | | | | | | |
| Output Voltage on Mains Mode | Same as Input | | | | | | |
| Output Frequency on Mains Mode | Same as Input | | | | | | |
| SOLAR CHARGER | | | | | | | |
| Topology | MPPT | | | | | | |
| Maximum Connected Panel Array Power (W) | 300 | 1500/2000 | | 3500/5000 | 5000/6000 | 7500 | 10000 |
| Maximum Connected Panel Array Voc. (V) | 35 | 50 | | 120 | 250 | 300 | 400 |
| Recommended Panel Array Vmp. (V) | 18-30 | 30-36 | | 62-108 | 120-144 | 120-144 | 270-360 |
| PROTECTIONS AND INDICATIONS | | | | | | | |
| At Respective Status/Fault Conditions | Alpha Numeric Dual LCD and LED Indications | | | Alpha Numeric LCD Display | | | |
| Parameters LCD Inverter UPS | Output Power (Watt), Mains Input Voltage, Output Voltage, Temperature (Deg. C), Battery Voltage, Charging Current, Charging mode | | | | | | |
| Parameters LCD MPPT | Solar Panel Input Voltage (VP), Solar Panel Input Current (IP), Battery Voltage (VB), Battery Current (IB) KWH, Total KWH | | | | | | |
| Protections and Buzzer Indications | Low Battery, Overload, Short Circuit, Over Temperature, Solar Panel Reverse | | | | | | |

Applications



Telecom



UPS

Emergency
Lighting

Security



Utility



Railways



Photovoltaic



Universal

SOLAR SMART HYBRID INVERTER WITH WI-FI MONITORING FEATURE

FORTNER Solar Smart Hybrid Inverter with WI-FI Monitoring puts the power back in your hand to say goodbye to power outages and embrace a cleaner and brighter future without hassles.

With abundant features, these compact hybrid inverters provide seamless power backup solutions to the several challenges one faces in one's daily life and transform lives into perfect bliss



| MODEL | FORTNER FRBP VI TWIN |
|--|---|
| PHASE | 1-phase in / 1-phase out |
| MAXIMUM PV INPUT POWER | 7000W |
| RATED OUTPUT POWER | 6000W |
| GRID-TIE OPERATION | |
| PV INPUT (DC) | |
| Nominal DC Voltage / Maximum DC Voltage | 360 VDC / 500 VDC |
| Start-up Voltage / Initial Feeding Voltage | 120VDC / 150 VDC |
| MPP Voltage Range | 120 VDC ~ 430 VDC |
| Number of MPP Trackers / Maximum Input Current | 1 / 27A |
| GRID OUTPUT (AC) | |
| Nominal Output Voltage | 220/230/240 VAC |
| Output Voltage Range | 184 - 264.5 VAC or 195.5 - 253 VAC (Selectable) |
| Nominal Output Current | 26A |
| Power Factor | > 0.99 |
| EFFICIENCY | |
| Maximum Conversion Efficiency (DC/AC) | 95% |
| OFF-GRID OPERATION | |
| AC INPUT | |
| AC Start-up Voltage / Auto Restart Voltage | 120 - 140 VAC / 180 VAC |
| Acceptable Input Voltage Range | 90 - 280 VAC or 170 - 280 VAC |
| Frequency Range | 50 Hz/60 Hz (Auto sensing) |
| Maximum AC Input Current | 40 A |
| PV INPUT (DC) | |
| Maximum DC Voltage | 500 VDC |
| MPP Voltage Range | 120 VDC ~ 430 VDC |
| Number of MPP Trackers / Maximum Input Current | 1 / 27A |
| BATTERY MODE OUTPUT (AC) | |
| Nominal Output Voltage | 220/230/240 VAC |
| Output Waveform | Pure sine wave |
| Efficiency (DC to AC) | 93% |
| HYBRID OPERATION | |
| PV INPUT (DC) | |
| Nominal DC Voltage / Maximum DC Voltage | 360 VDC / 500 VDC |
| Start-up Voltage / Initial Feeding Voltage | 120VDC / 150 VDC |
| MPP Voltage Range | 120 VDC ~ 430 VDC |
| Number of MPP Trackers / Maximum Input Current | 1 / 27A |
| GRID OUTPUT (AC) | |
| Nominal Output Voltage | 220/230/240 VAC |
| Output Voltage Range | 184 - 264.5 VAC or 195.5 - 253 VAC (Selectable) |
| Nominal Output Current | 26A |
| AC INPUT | |
| AC Start-up Voltage / Auto Restart Voltage | 120 - 140 VAC / 180 VAC |
| Acceptable Input Voltage Range | 90 - 280 VAC or 170 - 280 VAC |
| Maximum AC Input Current | 40 A |
| BATTERY MODE OUTPUT (AC) | |
| Nominal Output Voltage | 220/230/240 VAC |
| Efficiency (DC to AC) | 93% |
| BATTERY & CHARGER | |
| Nominal DC Voltage | 48 VDC |
| Maximum Solar Charging Current | 120 A |
| Maximum AC Charging Current | 120 A |
| Maximum Charging Current | 120 A |
| GENERAL | |
| PHYSICAL | |
| Dimension, D x W x H (mm) | 140 x 295 x 468 |
| Net Weight (kg) | 14 |
| INTERFACE | |
| Parallel Function | Yes, 9 units |
| Communication Port | USB, RS-232, Dry Contact and Wifi |
| ENVIRONMENT | |
| Humidity | 0 ~ 90% RH (No condensing) |
| Operating Temperature | -10°C to 50°C |

Product specifications are subject to change without further notice.

SMART MPPT INVERTER (Off Grid)

COMPATIBLE WITH LI-ION BATTERY

FORTUNER Smart MPPT Inverter with Li-Ion batteries is designed for systems where every watt counts, and the life of the battery is important to keep the system running for years.

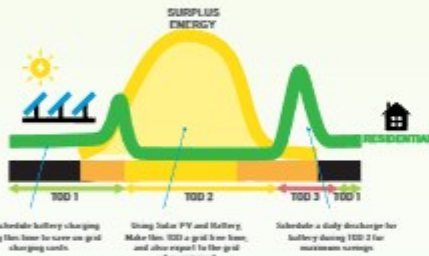
These inverters make optimal use of sunlight, generate the highest amount of energy, reduce the system payback period, and come with future-proof technology.



| MODEL | HOME PRO FR Premium 3K | INDUSTRY PRO FR Premium 5K | FR BP TWIN 8K | FR BP TWIN 11K |
|---------------------------------------|--|----------------------------|-----------------------------------|---------------------|
| RATED POWER | 3000VA/3000W | 5000VA/5000W | 8000VA/8000W | 11000VA/11000W |
| PARALLEL CAPACITY | Yes, 6 Units | | | |
| INPUT | | | | |
| Voltage | 230 VAC | | | |
| Selectable Voltage Range | 170-280 VAC (For Personal Computers) 90-280 VAC (For Home Appliances) | | | |
| Frequency range | 50 Hz/60Hz (Auto Sensing) | | | |
| OUTPUT | | | | |
| AC Voltage Regulation (Batt.Mode) | 230VAC \pm 5% | | | N/A |
| Surge Power | 6000 VA | 10000 VA | 16000 VA | 22000 VA |
| Efficiency (Peak) | 93% | | | |
| Transfer Time | 10ms (For Personal Computers), 20ms (For Home Appliances) | | | |
| Waveform | Pure Sine Wave | | | |
| BATTERY | | | | |
| Battery Voltage | 24 VDC | 48 VDC | 48 VDC | 48 VDC |
| Floating Charge Voltage | 27 VDC | 54 VDC | 54 VDC | 54 VDC |
| Overcharge Protection | 32 VDC | 63 VDC | 66 VDC | 63 VDC |
| SOLAR CHARGER & AC CHARGER | | | | |
| Solar Charger Type | MPPT | | | |
| Maximum PV Array Power | 3000 W | 5000 W | 8000W (4000W X 2) | 11000W (5500W X 2) |
| MPPT Range @ Operating Voltage | 60~400 VDC | 120~450 VDC | 90~450 VDC | 90~450 VDC |
| Maximum PV Array Open Circuit Voltage | 450 VDC | 500 VDC | 500 VDC | 500 VDC |
| Maximum PV Input Current | 27A X 2 (MAX 40A) | | | |
| Maximum Solar Charge Current | 100 A | 100 A | 120 A | 150 A |
| Maximum AC Charge Current | 80 A | 100 A | 120 A | 150 A |
| Maximum Charge Current | 100 A | 100 A | 120 A | 150 A |
| PHYSICAL | | | | |
| Dimension, DXWXH (mm) | 110 X 288 X 390 | 120 X 300 X 440 | 147.4 x 432.5 x 553.6 | |
| Net Weight (Kgs) | 7.2 | 10 | 18.4 | |
| Communication Interface | RS232/RS485, Optional WiFi | | USB/RS232/RS485/WIFI/Dry- Contact | |
| OPERATING ENVIRONMENT | | | | |
| Humidity | 5% to 95% Relative Humidity (Non- Condensing) | | | |
| Operating Temperature | -10° C to 50° C | | | |
| Storage Temperature | -15° C to 60° C | | | |
| STANDARD | | | | |
| Compliance Safety | CE | | | |

ENERGY STORAGE SYSTEMS

- A perfect combination of our robust Hybrid inverter technology and an energy pack of Li-Ion battery -it provides enough punch to run your heavy duty loads like air conditioners, compressors, etc.
- This grid-synchronised plus storage-based solar pack promises 100% utilisation of power as compared to conventional solar PCUs.
- You can now store the electricity as per time-of-day (TOD) and export to the grid during lean load periods or when you are not at home.
- Run your loads on this heavy-duty inverter system and get rid of high electricity bills.



ESS With LiPO4 Battery

| TECHNICAL DATASHEET | | |
|---------------------------------------|--|---------------------|
| INVERTER MODEL | IR-A610 | IR-B6W |
| Rated Output Power | 5000VA / 5000W | 8000VA / 8000 W |
| INPUT | | |
| Voltage | 230 VAC | |
| Selectable Voltage Range | 170-280 VAC (For computers) ; 90-280 VAC (for Home Appliances) | |
| Frequency Range | 50 Hz / 60 Hz (Auto Sensing) | |
| OUTPUT | | |
| AC Voltage Regulation (Batt. Mode) | 230VAC ± 5 % | |
| Surge Power | 10000 VA | 16000 VA |
| Efficiency (Peak) | 93% | |
| Transfer Time | 15ms (for Personal Computers), 20ms (For Home Appliances) | |
| Waveform | Pure Sine Wave | |
| SOLAR CHARGER & AC CHARGER | | |
| Solar Charger Type | MPPT | |
| Maximum PV Array Power | 5000 W | 8000 W (4000W x 2) |
| MPPT Range Operating Voltage | 120 ~ 450 VDC | 90~650 VDC |
| Maximum PV Array Open Circuit Voltage | | 500 VDC |
| Maximum Solar Charge Current | 100 A | 150 A |
| Maximum AC Charge Current | 100 A | 150 A |
| Maximum Charge Current | 100 A | 150 A |
| PHYSICAL | | |
| Dimension, (DxWxH) (mm) | 210 X 621 X 530 | 214 X 621 X 500 |
| Net Weight (kgs) | 15 | 25 |
| STANDARD | | |
| Compliance Safety | IEC/EN 62109-1/-2, EN 61000-6-4, EN 61000-6-2 | |
| | IEC/EN 62109-1/-2, EN 61000-6-4, EN 61000-6-2, IEC/EN IEC 61000-3-11, IEC/EN 61000-3-12, IEC 61563 | |
| BATTERY MODULE | IR-B-4810 | IR-B-4810 |
| CAPACITY | 5120 Wh | 5000 Wh |
| PARAMETERS | | |
| Nominal Voltage | 51.2 VDC | |
| Full Charge Voltage (FC) | 56V | |
| Full Discharge Voltage (FD) | 42V | |
| Typical Capacity | 100Ah | |
| Max. Continuous Discharging Current | 150A | |
| Max. Discharging Current | 192A at 1 min | |
| Protection | BMS Breaker | |
| Charge Voltage | 56V | |
| Charge Current | 20A (0.2C) | |
| Maximum Charge Current | 50A (0.5C) | |
| Standard Charge Method | 0.2C CC (Constant Current) charge to FC, CV (Constant Voltage) C Charge till charge current decline to < 0.05C | |
| Inner Resistance | <20m ohm | |
| PARAMETERS | | |
| Dimension, (DxWxH) (mm) | 210 x 621 X 551 | 214 X 621 X 550 |
| Net Weight (kgs) | 55 | |
| STANDARD | | |
| Compliance Safety | IEC 2615, EN 61000-6-3, EN 61000-6-1, UNCE, UN38.3 | |



Timed Scheduling Features



Synchronises with Grid for Power Export



Plug 'N' Play A Drawing Room solution



Runs your heavy loads



LITHIUM-ION BATTERY

Lithium iron phosphate batteries are becoming popular nowadays and are capable of charging and discharging at high speeds in comparison to other types of batteries. These rechargeable batteries consists of LiFePO₄-as their cathode material; hence the name.

Lithium iron phosphate batteries (LiFePO₄ or LFP) offer lots of benefits compared to lead-acid batteries and other lithium batteries, like longer life span, zero maintenance, safe working, light weight, improved discharge and good charge efficiency, just to name a few.

LiFePO₄ batteries are available at premium in the market, but due to a long life span and zero maintenance, it's the best investment you can make over time.



Our Salient Features

- Better power density : High energy density as compared to other Batteries.
- Charge & Discharge rate: The charge rate of lithium iron phosphate is 1C and the discharge rate of 1- 25°C.
- Self Discharge Rate : 1-3% Per month.
- Increased safety : Low risk of thermal runaway.
- Operating temperature range : 20°C-60°C.
- Cycle life: >2000 cycles, up to 10,000, depending on conditions.
- Light weight: A LiFePO₄ battery weighs one third that of lead-acid batteries.
- Environment-friendly battery: Generally considered free of rare and heavy metals are non-polluting and non-toxic.



Cylindrical Cells



Prismatic Cells



Rack Mounted Lithium Battery

Applications



Telecom



UPS



Solar Street Light



Electric cars (EV/HEV/PEV)



Utility



Railways



Solar/ Wind Energy Storage



Universal Energy Storage

STATIC STABILIZER

FORTUNER Static Voltage Stabilizers are developed exclusively for providing voltage control, protection, and management to the systems, which are microprocessor controlled and have high-speed semiconductor technology.

The Extremely High Speed of Correction provides perfectly stable output even under the severe conditions of unbalanced voltages, making it ideal for protecting electrical and electronic equipment from high and low voltages. The static stabilizers are equipped with advanced features like digital signal processors to automatically sense the voltage fluctuation and correct them instantaneously to protect the appliances from short circuits and over currents.



- New technological design that is suitable for industrial environments with very dusty conditions, humidity and vibrations.
- Maintenance free design.
- Safe usage for all electrical devices. Minimum size and long life.
- User friendly, easy and comprehensive LCD Display and mimic diagram.
- Compact structure with high quality material and minimum malfunction hazard.
- Surge Arrester to protect against sudden voltage increases and Streaks Lightings.
- Protection against over load, over temperature, high voltage and low voltage etc.
- Parallel connection for special high power applications and Self test facility.

More
Reliable



Tight
Regulated
output +/- 1%



No Moving
parts, Less
maintenance



Fast Correction
speed



High Efficiency



IGBT PWM AC
to AC Switching
control.



Applications



Telecom



UPS



Solar Street
Light



Electric cars
(EV/ HEV/ PEV)



Utility



Railways



Solar/ Wind
Energy Storage



Universal

TECHNICAL SPECIFICATIONS

| Particulars | Single Phase | Three Phase |
|---|--|--|
| Capacities Discreet IGBT based IGBT module based | 1KVA to 30KVA 30KVA to 70KVA | 3KVA to 90KVA 90KVA to 200KVA |
| Control type | DSP based IGBT PWM switching | DSP based IGBT PWM switching |
| Input Voltage Range for 220V output - Normal Wide Extended | 180V to 260V 150V to 290V 90V to 300V | 312V to 450V 260V to 500V 155V to 520V |
| Input Voltage Range for 110V output - Normal Wide Extended | 90V to 130V 75V to 145V 45V to 175V | 155V to 225V 130V to 250V 78V to 300V |
| Output Voltage | 220V +/- 1% settable 110V +/- 1% settable | 220V +/- 1% settable 110V +/- 1% settable |
| Regulation | +/- 1% | +/- 1% |
| Efficiency | 97% | 97% |
| Input Frequency | 45Hz to 65Hz | 45Hz to 65Hz |
| Wave Form | Same as Input | Same as Input |
| Effect of Power Factor | Nil | Nil |
| Display | LCD for – Input voltage Output voltage Load VA Line frequency Overload High voltage input Low voltage input Cut off mode Bypass mode Set up mode Name of your company | LCD for – Input voltage Output voltage Load VA Line frequency Overload High voltage input Low voltage input Cut off mode Bypass mode Set up mode Name of your company |
| Rate of Correction | 20000V per second | 20000V per second |
| Operating Temperature | 0 to 50 deg. Celsius | 0 to 50 deg. Celsius |
| Duty cycle | Continuous | Continuous |

| Nature of Cooling | Air cooled | Air cooled |
|-------------------|--|--|
| Mains bypass | Auto bypass to mains when stabilizer is on cut off mode and mains input voltage is between 190V to 250V. | Auto bypass to mains when stabilizer is on cut off mode and mains input voltage is between 190V to 250V. |
| Protections | Overload Short circuit High voltage Low voltage | Overload Short circuit High voltage Low voltage |
| Trip and restart | Auto | Auto |
| Transformer | 1/5th size of the Rated VA | 1/5th size of the Rated VA |

WALL MOUNTED INVERTER WITH INBUILT Li-ION BATTERY

FORTUNER Wall Mounted Inverter with inbuilt Li-ion Batteries are facilitated with Intelligent Battery Management System and safety mechanism against surge and short circuits.

Our Salient Features

- No Maintenance
- Consistent Battery Backup throughout its Life
- Sine Wave Home UPS system with inbuilt battery
- Longer Life.
- No Acid Fumes and Spillage
- No Obtruding Dangling Wires.
- Available in 1 kVA/ 12V & 2kVA/ 24V



PORTABLE INVERTER WITH INBUILT AGM VRLA (SMF) BATTERY

FORTUNER Portable inverter with inbuilt SMF Battery gives you light anytime and anywhere you go as it has constant power backup.

Specially designed charging system, swiftly charges the battery and increase battery life.

Our Salient Features

- MOSFET Based Digital Technology
- No battery wire losses.
- Ensure Long Battery Life
- Compact & Highly Efficient.
- Plug and Play
- DIY Application
- No Dangling Wires



SOLAR CHARGE CONTROLLER

D SERIES & Z SERIES (20 AMPS., 30 AMPS. & 60 AMPS.)

- 12V/ 24 V/ 36V/ 48V Auto Battery Selection
- LCD Display
- Settable Operating mode of Load
- Solar & Load Current Parameter Display
- Automatic Identification System Voltage level
- Intelligent PWM Charge Mode
- With USB Port



MPPT - SERIES (10 AMPS. - 80 AMPS.)

- 12V/ 24V Auto Battery Selection
- Intelligent Maximum Power Tracking
- LCD Display
- High Efficiency
- Wide PV input range
- Intelligent PWM Charge Mode Overload, Short Circuit Protection
- Solar: Battery, Voltage & Current Parameter Display
- Battery Reverse Connection Protection



SOLAR MANAGEMENT UNIT (SMU) (10 AMPS. - 40 AMPS.)

- Wide Voltage Battery Range (12V - 96V)
- 10 Amps. to 40 Amps.
- LED/ LCD Display
- High Efficiency Zero Drop/ MPPT Solar Charger
- Compatible with any brand Inverter
- Cost Effective Solution
- Battery Reverse: Discharge Protection
- Battery Reverse: Connection Protection



SOLAR MAX & SOLAR HI MAX- SERIES (10 AMPS.- 60 AMPS.)

- Wide Voltage Range (12V - 240V)
- LED/ LCD Display
- 10 Amps. to 60 Amps.
- High Efficiency Zero Drop Solar Charger
- Cost Effective Solution
- Battery Reverse: Discharge Protection
- Battery Low Voltage Disconnection (LVD)



DEEP CYCLE SOLAR BATTERY (VRLA & OPZV)

FORTUNER Deep Cycle Batteries are the best solution for renewable energy storage systems that ensure reliability and longevity. Unlike some manufacturers who simply repackage existing battery products into a new array and call it a solar battery, we understand market needs and have developed an innovative Deep-cycle solar storage battery that provides the best available power storage solution for contemporary Solar and Wind power systems. We have a comprehensive capacity range of Deep-cycle Solar batteries. Our batteries are heavyweight, and that's important! "Heavy" means energy-dense plates that use more active lead material. Heavier plates that use more lead material are directly related to higher battery performance and longevity. So, even if the batteries look similar, batteries with more active lead material will last longer. These batteries are best suited for applications like Offshore Oil rigs, Power generation industries, Solar off-grid power backups, and Telecommunication setups.



Our Salient Features

- Completely sealed units to make them leakage and spillage-free.
- The battery is free to install in any position.
- Much more efficient than others owing to active material for faster charge acceptance.
- No failure due to Partial State of Charge (PSoC).



10 Hrs. Capacity which gives extra power



High Efficiency of Recovery



Low Self Discharge which increase the Battery Life.



High Efficient Deep Discharge



Maintenance Free



No Electrolytic Stratification



Triplex Sealed Construction



Heavier plates which gives more Power & Longer Backup



TECHNICAL SPECIFICATIONS

VRLA (AGM & GEL) BATTERIES

2V - 100AH TO 3000AH

12V - 7AH TO 250AH

FORTUNER VRLA (AGM & GEL) Batteries are orientation-free batteries and are used widely in large portable electrical devices, where large amounts of storage are required, and that too at a lower cost than other maintenance-free batteries like Lithium-ion.

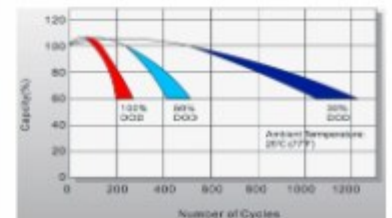
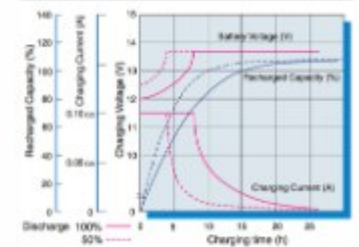
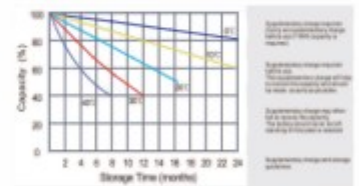
These batteries are rugged and are best suited for rough and tough operating conditions. They offer much more resistance to extreme temperatures, vibrations, and shocks.

Our Salient Features

- Low self- discharge rate: ≤3% month
- High sealed reaction efficiency: ≤99%
- Structure: Compact design, shorter internal connectors between cells
- Terminal: Two or more types terminals are convenient for selection
- Terminal Sealing: Double sealing technique (mechanical + epoxy glue)
- Separator: Using improved AGM separator, makes lower resistance higher assembling pressure to increase deep cycle life
- Good high rate discharge performance
- Wide operation temperature range : - 20-60°C
- Plate: Pasted flat type, with advance deep cycle formula of AM
- Vent system: Gases can be vented through flame arrester/ filter
- Battery case: Made of high strength ABS(UL94- HB) & (UL94- V0) is optional

| Model | Voltage | Capacity AH | HR Rating | Weight (In kg)±2% | Dimension (In mm) | | |
|----------|---------|-------------|---------------------------|-------------------|-------------------|-------|--------|
| | | | | | Length | Width | Height |
| FR 12072 | 12 | 7.2 | Available in 20 HR & 10HR | 2.2 | 151 | 65 | 93.5 |
| FR 1250 | 12 | 50 | | 13.70 | 229 | 138 | 210 |
| FR 1270 | 12 | 70 | | 22.07 | 260 | 169 | 210 |
| FR 12100 | 12 | 100 | | 31.0 | 328 | 172 | 222 |
| FR 12150 | 12 | 150 | | 45.0 | 483 | 170 | 24 |
| FR 12200 | 12 | 220 | | 64 | 522 | 240 | 219 |

| Model | Voltage | Capacity AH | HR Rating | Weight (In kg)±2% | Dimension (In mm) | | |
|---------------|---------|-------------|-----------|-------------------|-------------------|-------|--------|
| | | | | | Length | Width | Height |
| FROP2V 2-200 | 2 | 200 | 10 HR | 16.8 | 103 | 206 | 355 |
| FROP2V 2-600 | 2 | 600 | | 46.5 | 145 | 206 | 506 |
| FROP2V 2-1000 | 2 | 1000 | | 77 | 233 | 210 | 648 |
| FROP2V 2-1500 | 2 | 1500 | | 110 | 275 | 210 | 831 |
| FROP2V 2-2000 | 2 | 2000 | | 150 | 399 | 214 | 807 |
| FROP2V 2-2500 | 2 | 2500 | | 190 | 487 | 212 | 807 |
| FROP2V 2-3000 | 2 | 3000 | | 225 | 576 | 212 | 802 |
| FROP2V 12-100 | 12 | 100 | | 36 | 407 | 177 | 225 |
| FROP2V 12-160 | 12 | 160 | | 57 | 530 | 209 | 219 |
| FROP2V 12-200 | 12 | 200 | | 73 | 520 | 268 | 225 |



TUBULAR BATTERY

(100AH- 250AH)

FORTUNER Tubular Batteries are designed for high charge efficiency, low self-discharge, ultra-low maintenance, and high cycle life. These batteries are suitable for frequent power cut areas and are exclusively recommended for tropical climates. These are highly reliable and are steady in performance. Their level indicators keep the user informed about their maintenance. The Eco-friendly aqua trap vent plugs provided in these batteries ensure that there should be no acidic fumes.



Our Salient Features

- Batteries are designed to withstand frequent & long power cuts with quick recharge adaptability. Longer Life cycles.
- Low Antimony alloy of the Spines Ensure a very low self discharge.
- Extra thick Tubular Plates with superfine Grain Structure, Minimize Grid Corrosion of High Temperature.
- Eco Friendly Microporus Ceramic Vent cum float indicator to reduce topping up frequency & to ensure no Acidic Fumes.
- High Quality Envelope Separator Ensures Longer life.
- Designed with a bigger electrolyte reserve volume to ensures less topping up during service life usually it is once in a year.

| S. No | MODEL | AH CAPACITY | TYPE | DIMENSIONS (MM) |
|-------|------------|-------------|--------------|-------------------|
| 1 | FR12X250TT | 250AH | TALL TUBULAR | IT500-545X235X475 |
| 2 | FR12X220TT | 220AH | TALL TUBULAR | IT500-545X235X475 |
| 3 | FR12X200TT | 200AH | TALL TUBULAR | IT500-545X235X475 |
| 4 | FR12X180TT | 180AH | TALL TUBULAR | IT500-545X235X475 |
| 5 | FR12X150TT | 150AH | TALL TUBULAR | IT500-545X235X475 |
| 6 | FR12X100TT | 100AH | FLAT PLATE | IT500-475X245X235 |

Applications



Utility



Railways



Photovoltaic



Universal



Telecom



UPS



Emergency Lighting



Security

TUBULAR GEL BATTERY (MAINTENANCE FREE) (100AH TO 250AH)

FORTUNER Tubular Gel Battery adopts immobilized GEL and Tubular Plate technology to offer high reliability and performance. Deep cycle Tubular gel 12V battery have precision German vent valves and no opening for water levels to check. Being a sealed unit, there is no risk of acid spillage. This battery can be installed in a horizontal or vertical position. Recharging is performed much more efficiently due to the special design of the active materials for faster charge acceptance. Gelled electrolyte ensures no stratification of acid & failure due to Partial State of Charge (PSoC).



Maintenance Free: No topping up water during the operational life

Self discharge: Approx. 2% per month at 25°C

Recovery after deep discharge: Very good

Operational Life: >20 years in standby float operation @25°C



Reliability: Peace of mind that the OPzV cell backup power supply will remain constant; longer power backup discharges during a power outage

Operational temperature: -20°C to 45°C, recommend 10°C to 35°C, short time 45°C to 55°C

German Design: With balanced active materials delivers battery capacity that meets specifications international

Durability: Robust heavy-duty construction, coupled with deep-discharge performance

Applications



Utility



Railways



Photovoltaic



Universal



Telecom



UPS



Emergency Lighting



Security

SOLAR PHOTOVOLTAIC

MODULE (Monocrystalline & Polycrystalline)

Unique frame design with high Mechanical strength

Excellent performance under low light conditions

Advanced module processing technology

High conversion efficiency & Higher output

Easy installation & Low breakage rate

| Electrical Parameters | | | | | | | | | | | |
|--|--|-------------------------------|----------|------------------|--|----------|----------|----------|----------|----------|--|
| Model | FRS 50W | FRS 80W | FRS 100W | FRS 180W | FRS 235W | FRS 220W | FRS280W | FRS 320W | FRS 450W | FRS 550W | |
| | Half cut Cell & High Voltage | | | | | | | | | | |
| Maximum Power (P _{mx}) Wp | 50 | 80 | 100 | 180 | 235 | 220 | 280 | 320 | 450 | 550 | |
| Maximum Power (V _{mp}) | 17.50 | 18.00 | 18.00 | 18.55 | 31.00 | 26.75 | 31.00 | 37.00 | 43.50 | 42.02 | |
| Maximum Voltage (V _{mp}) | 2.80 | 4.70 | 5.60 | 8.70 | 7.60 | 8.25 | 8.90 | 8.80 | 9.92 | 12.98 | |
| Open Circuit Voltage (V _{oc}) | 21.50 | 22.00 | 22.00 | 22.00 | 37.50 | 33.20 | 37.40 | 44.50 | 50.02 | 50.14 | |
| Short Circuit Current (I _{sc}) | 3.15 | 4.45 | 6.10 | 9.20 | 8.10 | 8.70 | 9.42 | 9.35 | 11.08 | 13.55 | |
| Junction Box | IP 65 rated Water Proof Nylon 6 | | | | | | | | | | |
| Cable | On Request | | | | Double Insulated Solar Cable with MC4 Connector | | | | | | |
| Front Glass | Low Iron Content, toughened & tempered High transmittance with Glass | | | | | | | | | | |
| Solar Cells | 36 Cells | | | 60 Cells | 54 Cells | 60 Cells | 72 Cells | | | | |
| Cell Encapsulation | EVA (Ethylene Vinyl Acetate) | | | | | | | | | | |
| Back Sheet | TPT / EVA White Color | | | | | | | | | | |
| Frame | Anodized Aluminum Frame | | | | | | | | | | |
| Temperature Coefficients | Operating Conditions | | | | | | | | | | |
| | Temperature Range | | | (-40°C to +85°C) | | | | | | | |
| Coefficients of Current α | 0.05%/°C | Maximum System Voltage | | | 1000V | | | | | | |
| Coefficients of Voltage β | 0.34%/°C | Maximum Surface Load Capacity | | | Tested up to 2400Pa according to IEC 61215 | | | | | | |
| Coefficients of Power γ | 0.45%/°C | Warranty | | | 10 Years Product Workmanship, 25 Years Linear Power Warranty | | | | | | |

All Electrical Parameter Specified at STC: 25°C, Cell Temperature : 1000W/m, Irradiance: AM 1.5

WI-FI MINI UPS

FORTUNER WiFi UPS is a micro UPS for WiFi Routers and provides continuous power supply even during a power failure. FORTUNER WiFi UPS comes with "Smart Charging".

The Battery management System(BMS) ensures that the WiFi UPS charges itself when there is electricity and starts drawing power from the battery during a power failure. This also ensures an optimum battery life. A new device is completely discharged by the BMS to facilitate safe transportation of the device.

Our Salient Features

- Long Back-up
- Easy Installation
- Compact Size
- DIY Installation.



ONLINE UPS (500VA - 500KVA)

FORTUNER Online UPS is a power-packed UPS, that comes with a lot of advanced features, which makes it the most preferred choice in the market.

Our Salient Features

- Online double conversion.
- Full DSP Control.
- High output power factor.
- Wide input adaptability.
- Optimized battery management.
- N+X Parallel redundancy.
- Strong overload capability.
- Power walk in.
- Generator mode.
- LBS synchronization.
- Multi-protection.
- EPO function.
- User-friendly network management.
- Remote Monitoring SNMP/GSM(optional).

ISOLATION
TRANSFORMER
ADVANTAGE OF
NOISE REDUCTION



LED LIGHTING



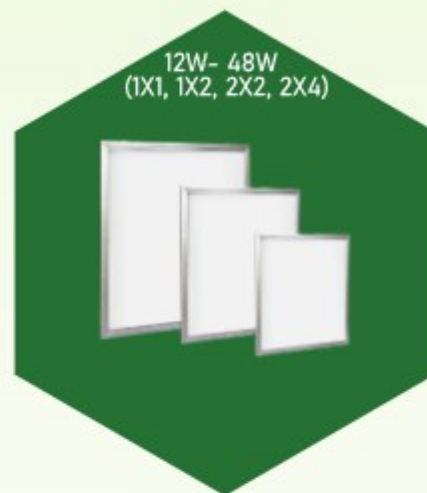
CONCEAL LIGHT(3W TO 12W)
 SPECIFICATION

- Efficacy: 80lm/Watt±10%
- High Efficiency: >89%
- High Power Factor >0.95
- CRI: >75
- No IR & UV radiation.
- Wide Mains input range: 100V - 440V.
- Constant Brightness even at low voltage condition.
- Longer Life - 50,000* hours, Low Maintenance.
- Surge Capacity: >4KV



COB LIGHT (3W TO 20W)
 SPECIFICATION

- Aluminum / Plastic Housing
- Efficacy: 100lm/Watt
- Wide Mains input range: 100V- 440V
- Efficiency: >90%
- High Power Factor > 0.95 & Low THD
- CRI: >75
- THD: <15%
- Surge Capacity: > 4KV



LED PANEL (EDGE LIT/ BACK LIT)
 SPECIFICATION

- Aluminum Enclosure
- Efficacy: 70lm/Watt
- Wide Mains input range: 100V- 440V
- Efficiency: >90%
- High Power Factor > 0.95 & Low THD
- CRI: >75
- THD: <15%
- Surge Capacity: > 4KV



LED PANEL (SLIM/ SURFACE)
 SPECIFICATION

- Efficacy: 70lm/Watt
- Extruded Aluminum/ Plastic housing
- Wide Mains input range: 100V- 440V
- Efficiency: >90%
- High Power Factor > 0.95 & Low THD
- CRI: >75
- THD: <15%
- Surge Capacity: > 4KV



LED LIGHTING

10W- 350W



LED FLOOD LIGHT SPECIFICATION

- IP 65 Aluminum Pressure Die Cast Enclosure
- Epoxy Powder Coated
- Heat Resistance and Toughened type Glass
- Efficacy: lm/Watt
- Wide Mains input range: 100V- 440V
- Efficiency: >90%
- High Power Factor > 0.95
- CRI: >75
- THD: < 10%
- Surge Capacity: > 4KV/ 6KV/ 10KV

MODEL: T5, T8
SIZES: 1ft, 2ft & 4ft



LED TUBE LIGHT(5W TO 24W) SPECIFICATION

- Efficacy: 100lm/Watt
- High Efficiency: 90%
- High Power Factor >0.95
- CRI: >75
- No IR & UV radiation
- Choice of T5/T8 Housing
- Wide Mains input range: 100V- 440V
- Constant Brightness even at low voltage condition
- Longer Life: 50,000* hours
- Low Maintenance
- Housing: Aluminium/ Plastic
- Surge Capacity: >4KV

24W- 250W



LED STREET LIGHT (AC/DC) SPECIFICATION

- IP 65 Aluminum Pressure Die Cast Enclosure
- Epoxy Powder Coated.
- Heat Resistance and Toughened type Glass
- Efficacy: 100lm/Watt
- Wide Mains input range: 100V- 440V
- Efficiency: >90%
- High Power Factor > 0.95
- CRI: >75
- THD: < 10%
- Surge Capacity: > 4KV/6KV/ 10KV

10W & 20W



T5 RETROFIT & T8 BATTEN LIGHT(ALUMINIUM) SPECIFICATION

- High system efficacy: 100 lm/Watt to 130lm/Watt
- Available with color temperature: 2700 K, 6500 K
- Color rendering index R a : > 80
- Power factor: > 0.95
- Long lifetime: up to 30,000 h
- BIS Approved
- Wide Voltage input range : 100V-440V
- AC Surge Protection : 4kv
- High & Low voltage cut

36W & 40W



GLOBAL PRESENCE

We follow clean energy buisness practices for a **GREENER TOMORROW.**



INTERNATIONAL PRESENCE

Owing to the finesse and globally competitive products, we have a significant international market. We export to countries like Tanzania, Lebanon, Nigeria, Kenya, UAE, Zambia, Zimbabwe & South Africa. We have rave reviews on our products from our international clients and we are continuously expanding our reach owing to greater demand for our products. This is proof enough for the stringent manufacturing quality we take care of.

OUR SERVICES



**Web Support
Team**



**Skills Development
Program**



**Technology Awareness
Program**



**Qualified Sales &
Support Team**



**Knowledge
Sharing**



**World wide Service &
Support Network**



**OEM & ODM
Manufacturing**



**Energy Audits
Service**

Get in Touch

PRODUCTS

Inverter / UPS

Online UPS

Deep Cycle Solar Batteries

Solar PV Module

Static Stabilizer

Solar UPS / Inverter

Grid Tie Solar Inverter

Charge Controller

LED Lighting

Other Products

www.indiamart.com/fortuner

<https://fortuners.m.trustpass.alibaba.com/>

<https://www.linkedin.com/company/fortuners-advanced-technology-p-ltd->

<http://www.facebook.com/FortunersTechnologyPvtLtd>

http://www.twitter.com/fortuners_Group

CONTACT

C-45, Sector-81, Noida-201305, UP (INDIA)

+91- 8126919394 | info@fortuners.net

exports@fortuners.net

www.fortuners.net



E-Contact



E-Catalogue

